

1998 | SINCE
XINXIANG AIDA MACHINERY EQUIPMENT CO., LTD

XINXIANG AIDA MACHINERY
EQUIPMENT
CO., LTD



NEW TYPES OF CRANES



Professional



Intelligent



Green



High quality



CONTACT: +86-373-5128206

Factory address: Industrial Zone, Fengquan District, Xinxiang City, Henan Province, China
FAX: +86-373-5419586 / EMAIL: sales@aidecrane.com / WEB: www.aidecrane.com



XINXIANG AIDA MACHINERY EQUIPMENT CO., LTD



Professional



Intelligent



Green



High quality

National green factory

Industrial enterprise quality benchmark enterprise

China Industry Award nomination

Provincial governor quality award winning enterprises

COMPANY PROFILE



Xinxiang Aida Machinery Equipment Co., Ltd was established in 2002, with a construction area of 1.62 millionsquare meters, 4277 employees and more than 3,500 sets of various advanced machine tools. It specializes in the research and design, manufacturing, sales and service of more than 110 kinds of cranes and accessory products in three series of "kuangyuan" bridge cranesgantry cranes and electric hoists. As a professional manufacturer and service provider of cranes and material handling products,it can providecustomers with turkey solutions and life cycle services. and it is committed to the intelicent green and high-auality development of the crane industry.

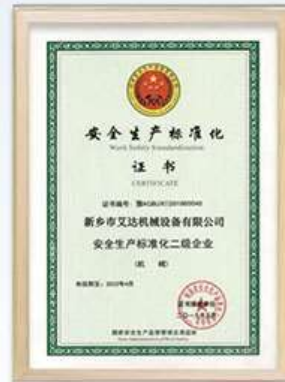
The company is the vice president unit of China Heavy Machinery Industry Association and a membership unit of China Association forQuality inspection. It has won over 500 great honors, including "China industrial Awards Nomination Award, "Quality Benchmarking Enterpriseof Chinese industrial Enterprises, "National Green Factory, National "Credit Contract Keeping Company, "National Single Champion Productin Manufacturing "High-tech Enterprise" "eading Enterprise of ndependent nnovation" "Henan Governor Quality Award", "Henan intelicentWorkshop" "Henan Provincial intelient Factory, "Henan Top 100 Enterprises" Henan Province's first batch of "Model Enterprise of ntegrationof Informatization and industrialization" It tops the national market among the same industry in China for many years in production and sales ofproducts, market share and level of automation and intelligent equipment.

In 2020 its production and sales volume have reached more than 100,000 units (sets). The company has 428 sales and serviceorganizations all over the country. serving more than 6,000 medium and high customers. t has achieved remarkable results in more than 50domestic and foreian key industries including aerospace, automobiles and ships, stee-smelting, cherica engineering, electronic informationelectric utility and water conservancy, railway and military industry. High-tech products of the company, such as remote monitoring cranesintelligent warehousing cranes, precise positioning cranes, automatic container gantry cranes, unmanned cranes, nuclear-grade speciacrane. clean exdlosion-proof automac cranes. mul-fucrum flexble cranes. serve arae enterprises including Baosteel, China Railway, ChinaMetalluraical Group Corporation.AVIC. The products sel wel domesticalvy and across more than 130 countries and reaions.

As a national hi-tech enterprise, the company has a technical team composed of over 10 leading experts in the industry as well as morethan 200 intermediate and senior engineers. Thanks to their innovative design and development the company owns over 300 national patentsand provinciallevel technica awards. The R & D institutes of the company includethe Enterprise Technical Center and the industrial DesignCenter, both of which are at provincial level, Henan Engineering Research Center for Energy-Saving Cranes, Key Technical Lab for Cranes andScholar Work Station of Central China The company has provided great support to the innovative development in the crane industry thanksto its cooperation with its long-term partners, which include Beiling Research Center of Lifting and Transporting Machinery, Henan ResearcCenter of Special Instrument Test, North China University of Water Resources and Electric Powe. and Tauan University of Science and Technology.

it is the wish of the company to build itself into a top-class enterprise that would prosperous forever in the crane industry. Adhering to itsenterprise values based on "filial piety culture" and ts comprehensive development objectives, the company is determined to playing a leadingrole in the top-quality development of the crane industry by means of honesty and friendly cooperation with friends from al walks of life.

QUALIFICATION CERTIFICATE



MAIN PRODUCTS ➤

The company produces and sells more than **11000** double beam and gantry cranes annually

More than **73000** single beam cranes

More than **100000** sets (sets) of single and double beam electric hoist and accessories



On the basis of digesting and absorbing the advanced design concept and manufacturing technology of cranes at home and abroad, the company makes every effort to redesign the single and double beam cranes and electric hoists, striving forward to "large tonnage, intelligent, lightweight and green manufacturing, and is in line with the international similar products.



Professional



Intelligent



Green



High quality



GANTRY CRANE

Gantry crane is mainly used for loading and unloading of goods in outdoor freight yard, stockyard and bulk cargo. It has the characteristics of high site utilization, large operation range, wide adaptability and strong universality.



MH type electric hoist gantry crane



MB type gantry crane



Container gantry crane



MG type double girder gantry crane



L type gantry crane



ME shipbuilding gantry crane



MG₆ type truss gantry crane



MZ double beam grab gantry crane

BRIDGE CRANE ➤

A bridge crane is such that its bridge moves on elevated tracks, also called overhead traveling crane. A bridge crane has its bridge longitudinally move along the elevated tracks laid at both sides and its carriage laterally move along the tracks laid on the bridge to make a rectangular working scope. In this way, the room below the bridge can be made full use of while being free of hindrances of equipment on the ground.



LD single girder overhead traveling crane



LX electric single-girder suspension crane



LDP type electric single girder crane



LH double-girder crane with electric hoist



QD type electric double beam bridge crane hook



QC Electromagnetic Bridge Crane



Clean explosion-proof automatic crane



YZS type four beam casting bridge crane

NEW LIFTING EQUIPMENT

Based on bringing in and assimilating foreign advanced technology, this type of crane takes modular design theories as guidance, uses modern computer technology as means, introduces optimized and reliable design methods, which is a new type of crane made by employing import configuration, new material and technology and has features in light-weight, generalizing, energy-conservation and environmental protection, maintenance free and high technology content.



Hoisting mechanism The design strictly carries out the relevant standards of FEM.

- | | | | |
|---|---------------------------------|--|--------------------------------------|
| With aluminum alloy
shell of reducer | Steady running
and low noise | Lifetime lubricating
(within safety service circle) | Double-disk
electromagnetic brake |
|---|---------------------------------|--|--------------------------------------|

- Light weight
- low operation cost

- high working performance
- small occupied space



TELESCOPIC ARM FORK MACHINE ➤



Model YFT3507

Standard Features

Measurements

- 3500 kgMaximum lift capacity
- 7.15 meters Maximum lift height
- 3.98meters Max working distance

Performance

- Full time 4WD
- 4WS
- Operator selectablefront,crab,coordinatedsteering modes
- Proportional,reversible,continuousauxiliary hydraulic flow control
- Manual quickly attach auxiliary device
- Hydraulic steering system
- Variable speed hydrostatic drive
- Wet disc brake
- Single multi-function proportionaljoystick
- Rear axle self-floating device
- Standard carriage and pallet forks device

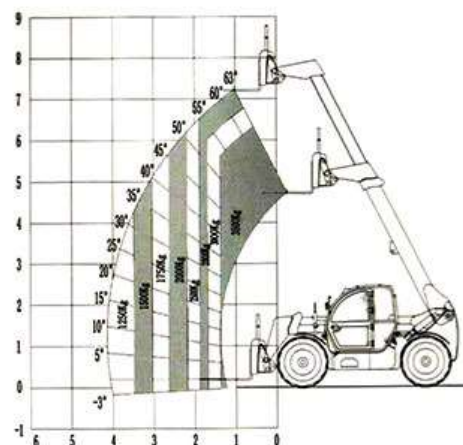
Options& Accessories

Productivity Option

- Air conditioner system
- Adjustable suspension
- Work light(2 LED cab ,1 LED boom and rear)

Attaching System Options

- Hydraulic quickly attach system
- Auxiliary hydraulicextended function
- Carriages
- Side shift carriage,rotating fork carriage
- Buckets
- Hydraulicgrab
- AerialWork bucket
- Other custom zable accessories



TELEHANDLERS TECHNICAL PARAMETERS ➤

No	Project	Name	Unit	YFT3507
1	Whole Machine	Car length(Without cargo fork and include cargo fork)	mm	4965/6250
2		Car width	mm	2300
3		Car height	mm	2470
4		Wheel distance	mm	1890
5		Whole quality	Kg	7730
6		Min ground clearance	mm	400
7		Min turning radius	mm	3800
8		Max driving speed	km/h	35
9		Full load climbing ability	%	45
10	Performance Parameters	Raise range	°	—3~63
11		The center distance of the load of cargo fork	mm	600
12		Max lifting capacity	kg	3500
13		The max lifting height of cargo fork	mm	7150
14		The max lifting capacity	kg	2800
15		The extension length when the cargo fork is the highest	mm	950
16		Max effective operation distance	mm	3980
17		The long-lasting time load of the cargo fork.	kg	1250
18	Drive System	Engine model		QSB3.9
19		Drive way		Static hydraulic
20		Drive type		4×4
21		Steer mode		Front wheel steer, crab, Four-wheel turning



BDG LOW -VOLTAGE RAIL FLATBED TRUCK



Main configuration: Car frame、motor、reducer、Wheel、Battery、Charger、control box etc

Suitable industry: Metallurgical, coal, mechanical and electrical, heavy labor, shipbuilding, light industry, etc.

Product Technical Data:

model	BDGS-5T	BDGS-10T	BDGS-20T	BDGS-40T	BDGS-50T	BDGS-100T	BDGS-150T
Load capacity	5	10	20	40	50	100	150
table size	Length	3500	3600	4000	5000	6500	10000
	Width	2000	2000	2000	2500	2500	2800
	Height	500	500	550	650	650	900
Wheel distance(mm)	2500	2600	2800	3800	4200	4900	7000
The side distance of rail(mm)	1435	1435	1435	1435	1435	2000	2000
Wheel diameter(mm)	φ300	φ300	φ350	φ500	φ500	φ600	φ600
Wheel quantity	4	4	4	4	4	4	8
Ground clearance(mm)	50	50	50	50	50	75	75
Travel speed(m/min)	0-25	0-25	0-20	0-20	0-20	0-20	0-18
Motor Power(Kw)	1.5	1.5	2.5	5.5	5.5	17	15
Transformer power(KVA)	5	5	6.8	10	10	30	30
Transformer Qty	1	1	1	1	1	1	1
Max Rotation(KN)	25.8	42.6	77.7	142.8	174	343.8	265.2
Weight for reference(t)	3.3	3.8	5.5	7.2	7.6	13.9	26
Recommend rail model	P18	P18	P24	P43	P43	QU100	QU100

Remark:

- 1.We can customize according to client's requirement for load capacity,table size and The side distance of rail etc.
- 2.Optional wireless remote control device
- 3.Optional automatic stop limit device when meet people.
- 4.Optional orbit automatic power off function.
- 5.It can choose imported electrical appliance or domestic electrical appliance .
- 6.Optional inverterless speed adjustment
- 7.Optional requirements for high-temperature occasion.



Reducer

The characteristics of our company's brand products are small, easy to use, and large output torque.



Wireless remote

Intelligent remote control, easy to control

Cable roll

The principle of magnetic stagnation is adopted to ensure that the speed of the rolling cable is always synchronized with the equipment speed.



Wheel

The wheel material uses ZG55 high-quality cast steel, the surface quenches, the bearings are double-rowed to the heart spherical roller bearings, and the shaft material is 45#.

Electrical box

The entire electrical control system is equipped with a variety of protection for these equipment to make the operation and control of the flat car more reliable.



Alarm light

Continue the sound and light alarm to remind the person

motor

Low-speed high-power operation starts with a large steady driving force, reduces the load voltage of the reducer, and the life span is long and the volume is small and the weight is light.



Car frame

For the box-type frame structure, after the fire is treated, the frame is not easy to deform.

PRODUCTION EQUIPMENT ➤

- More than 3500 sets of various processing equipment
- Intelligent finishing workshop
- Standardized constant temperature workshop 12000 square meters
- Siemens CNC system



Automatic welding robot for inner seam of double girder



End beam welding robot



Single beam welding robot



Gantry mobile machining center



CNC machining center



U-groove forming machine



CNC machining center



Wheel forging



CNC machining center



Production equipment